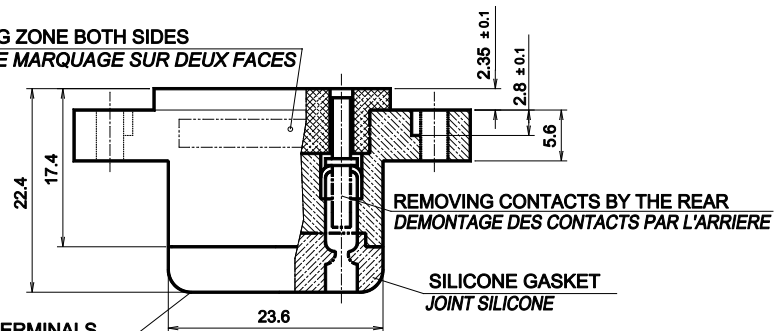


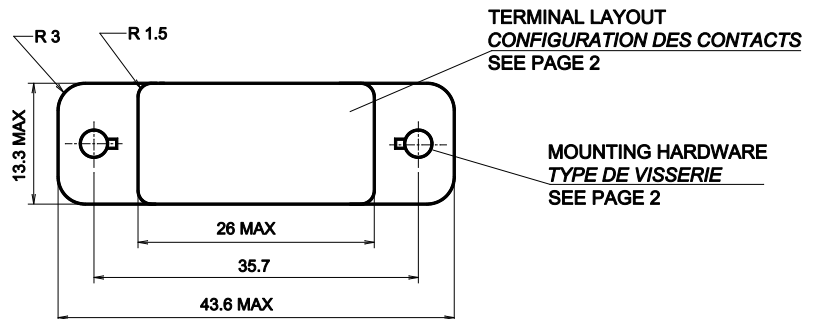


MARKING ZONE BOTH SIDES  
ZONE DE MARQUAGE SUR DEUX FACES



MARKING OF TERMINALS  
ON TOP AND GROMMET  
REPERAGE DES BORNES  
SUR FACE SUPERIEUR ET  
JOINT D'ETANCHEITE

**Applicable relays and sensors:**  
S300: M300, FD300, FLS300, FLR300  
S301: M301  
S302: M302, FLR300



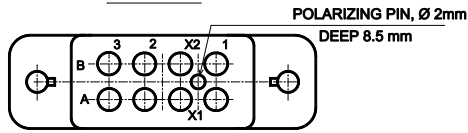
**GENERAL CHARACTERISTICS  
CARACTERISTIQUES GENERALES**

<b>Tooling #16</b> <i>Outillage #16</i>	<b>Crimp tool</b> <i>Pince à sertir</i>	M22520/1-01 with turret M22520/1-02 (Blue)
	<b>Insertion and extraction tool</b> <i>Outil d'insertion et d'extraction</i>	M81969/14-03
<b>Tooling #22 (for S302)</b> <i>Outillage #22 (pour S302)</i>	<b>Crimp tool</b> <i>Pince à sertir</i>	M 22520/2-01 with turret M 22520/2-14
	<b>Insertion and extraction tool</b> <i>Outil d'insertion et d'extraction</i>	M 81969/14-01
<b>Weight</b> <i>Poids</i>		35g max
<b>Temperature range</b> <i>Température d'utilisation</i>		-70° C to +125° C
<b>In accordance to</b> <i>En accord selon</i>		MIL-DTL-12883/41
<b>Contacts and hardware delivered in a separate plastic bag</b> <i>Contacts et visserie livrés séparément dans un sachet plastique</i>		
<b>Gasket sealed socket, crimp contacts</b> <i>Socle étanche par joint silicone, contacts à sertir</i>		

**TERMINAL LAYOUT  
TYPE DE SORTIE**

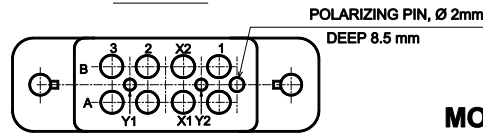
Dimensions in mm  
Tolerances, unless otherwise specified,  $\pm 0.25$ mm

**Series S300  
Code A**



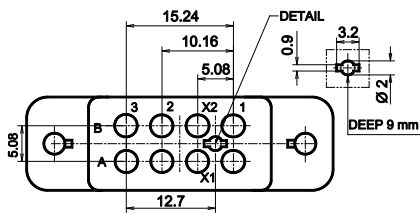
FOR RELAY M300, COIL A, B OR C

**Series S302  
Code D**



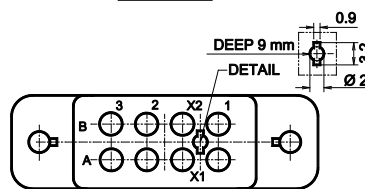
FOR RELAY M302

**Series S301  
Code B**



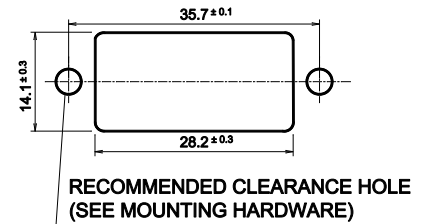
FOR RELAY M301, COIL F OR K

**Series S301  
Code C**



FOR RELAY M301, COIL E OR J

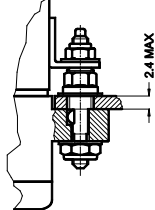
**MOUNTING HOLE LAYOUT  
DECOUPE DE LA STRUCTURE**



**MOUNTING HARDWARE  
TYPE DE VISSERIE**

**CODE 1 : 05 284 12**  
LOOSE STUD  
UNC HARDWARE

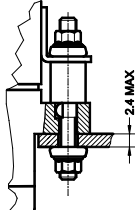
PANEL MOUNT HOLE:  $\varnothing 5,3$



MOUNTING TORQUE  
112-40: 0.45 Nm  
190-32: 1.2 Nm

**CODE 2 : 05 284 00**  
LOOSE STUD  
METRIC HARDWARE

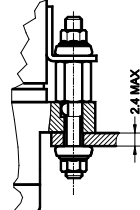
PANEL MOUNT HOLE:  $\varnothing 3,5$



MOUNTING TORQUE  
M3: 0.45 Nm

**CODE 3 : 05 284 07**  
LOOSE STUD  
METRIC HARDWARE

PANEL MOUNT HOLE:  $\varnothing 3,5$



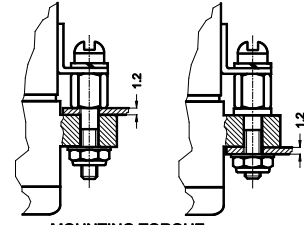
MOUNTING TORQUE  
M3: 0.45 Nm

**CODE 4**  
WITHOUT HARDWARE  
HOLE DIAM 2.9 mm  
FOR 112-40 SCREW

**CODE 5**  
WITHOUT HARDWARE  
HOLE DIAM 3.1 mm  
FOR M3 SCREW

**CODE 6 : 05 284 13**  
LOOSE STUD - UNC HARDWARE

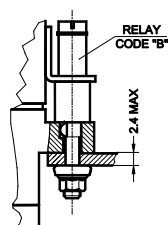
PANEL MOUNT HOLE:  $\varnothing 3,5$



MOUNTING TORQUE  
112-40: 0.45 Nm

**CODE 7 : 05 284 15**  
LOOSE STUD METRIC HARDWARE

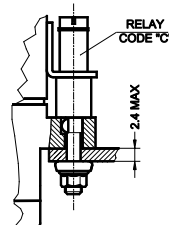
PANEL MOUNT HOLE:  $\varnothing 3,5$



MOUNTING TORQUE  
M3: 0.45 Nm

**CODE 10 : 05 284 16**  
LOOSE STUD UNC HARDWARE

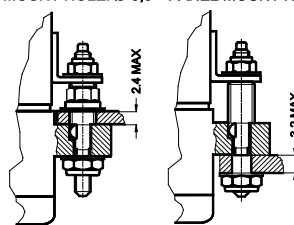
PANEL MOUNT HOLE:  $\varnothing 3,5$



MOUNTING TORQUE  
112-40: 0.45 Nm

**CODE 8 : 05 284 20**  
LOOSE STUD - UNC HARDWARE

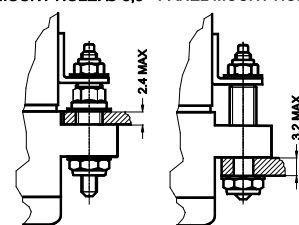
PANEL MOUNT HOLE:  $\varnothing 5,3$  PANEL MOUNT HOLE:  $\varnothing 3,5$



MOUNTING TORQUE  
112-40: 0.45 Nm  
190-32: 1.2 Nm

**CODE 9 : 05 284 21**  
FIXED STUD - UNC HARDWARE

PANEL MOUNT HOLE:  $\varnothing 5,3$  PANEL MOUNT HOLE:  $\varnothing 3,5$



MOUNTING TORQUE  
112-40: 0.45 Nm  
190-32: 2.0 Nm

**GROMMET TYPE**

**TYPE DE JOINT D'ETANCHEITE**

Wire sealing: A silicone grommet is permanently bonded to the wire entry face of the socket so as to provide sealing capabilities for AWG size 16, 18 and 20 or 20, 22 and 24 or 22, 24 and 26 wire as applicable.

*Etanchéité du fil : Un joint silicone fait partie intégrante du socle et permet de garantir une étanchéité des fils de AWG 16, 18 et 20 ou 20, 22 et 24 ou 22, 24 et 26.*

External wire diameter / Diamètre extérieur du Fil	CODE A	CODE B
	Recommended for contact Code 2 and 8	Recommended for contact Code 3 and 9
	Dimensions in mm	Dimensions in mm
Main contacts	1.2 to 2.4	0.8 to 1.6
X1-X2 Contacts	1.2 to 2.4	0.8 to 1.6
Y1-Y2 Contacts (S302)	0.8 to 1.4	0.8 to 1.4

**CONTACT SIZE AND STYLE**

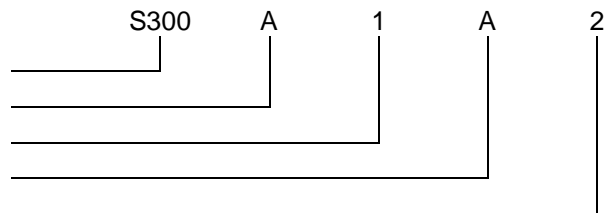
**TAILLE ET STYLE DE CONTACTS**

CODE 0			
WITHOUT CONTACTS			
CODE 2	CODE 3	CODE 8	CODE 9
<p>05 911 00</p> <p>MAIN CONTACTS CRIMP END TO ACCOMODATE WIRE # 16 - 18 - 20</p> <p>CONTACT MATING END # 16</p>	<p>05 911 10</p> <p>MAIN CONTACTS CRIMP END TO ACCOMODATE WIRE # 20 - 22 - 24</p> <p>CONTACT MATING END # 16</p>	<p>30 315 00</p> <p>MAIN CONTACTS (MIL-C-39029/92-533) CRIMP END TO ACCOMODATE WIRE # 16 - 18 - 20</p> <p>CONTACT MATING END # 16</p>	<p>31 315 10</p> <p>MAIN CONTACTS (MIL-C-39029/92-534) CRIMP END TO ACCOMODATE WIRE # 20 - 22 - 24</p> <p>CONTACT MATING END # 16</p>
<p>05 912 00</p> <p>Y1 -Y2 (S302)</p> <p>ASSOCIATED WITH CODE 2 OR 3 CRIMP END TO ACCOMODATE WIRE # 22 - 24 - 26</p> <p>CONTACT MATING END # 22</p>	<p>31 036 00</p> <p>Y1 -Y2 (S302)</p> <p>ASSOCIATED WITH CODE 8 OR 9 (MIL-C-39029/92-531) CRIMP END ACCOMODATE WIRE # 22 - 24 - 26</p> <p>CONTACT MATING END # 22</p>		

**SOCKET NUMBERING SYSTEM  
SYSTEME DE REFERENCES**

Basic series designation | Référence de base

1. Terminal layout | Type de sorties
2. Mounting hardware | Type de visserie
3. Grommet type | Type de joint d'étanchéité
4. Contact size and style | Taille et style de contact



Exemple : S300-A1A2

**S300,  
S301,  
S302**

**RELAY SOCKET CRIMP CONTACTS, 10 AMPS  
SOCLE A SERTIR POUR RELAIS, 10 A**



**MS/LEACH CROSS PART NO.  
CORRESPONDANCE MIL/LEACH**

MIL - Number	LEACH P/N	CONTACTS TYPE	HARDWARE	
MIL-DTL-12883/41	11S	S300-A8A8	8 x M39029/92-533	Loose Stud
	12S	S301-B8A8	8 x M39029/92-533	Loose Stud
	13S	S301-C8A8	8 x M39029/92-533	Loose Stud
	14S	S300-A8B9	8 x M39029/92-534	Loose Stud
	15S	S302-D8A8	8 x M39029/92-533 2 x M39029/92-531	Loose Stud
	16S	S300-A9A8	8 x M39029/92-533	Fixed Stud
	17S	S301-B9A8	8 x M39029/92-533	Fixed Stud
	18S	S301-C9A8	8 x M39029/92-533	Fixed Stud
	19S	S300-A9B9	8 x M39029/92-534	Fixed Stud
	20S	S302-D9A8	8 x M39029/92-533 2 x M39029/92-531	Fixed Stud