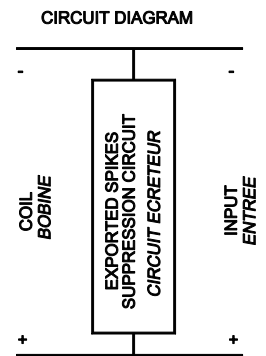
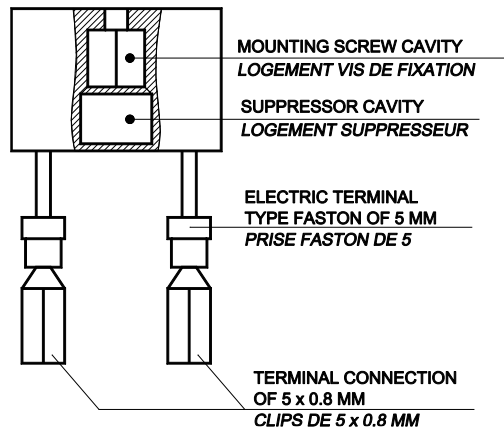


Coil suppression module for:
Series SF401-1F, SF402-1F,
SF600-2F



Dimensions in mm
Tolerances, unless otherwise specified, ±0.12mm

Note: The exported spikes suppression modules being bidirectional, the choice will be in accordance with the transitory power supply characteristics. Weight: 12.5 grams

*Les écrêteurs étant bidirectionnels, le choix tiendra compte des caractéristiques transitoires de la tension d'alimentation.
Masse: 12.5 grammes.*

GENERAL CHARACTERISTICS CARACTERISTIQUES GENERALES

Suppression module	Coil voltage	Suppression circuit
EC400-024V00	24V	1,5 KE43CA
EC400-072V02	72V	1,5 KE130CA
EC400-072V03	72V	1,5 KE150CA
EC400-072V04	72V	1,5 KE120CA
EC400-110V00	110V	1,5 KE200CA
EC400-110V01	110V	1,5 KE180CP

LEACH INTERNATIONAL EUROPE S.A.S.

Tel: +33 3 87 97 98 97
Fax: +33 3 87 97 96 86

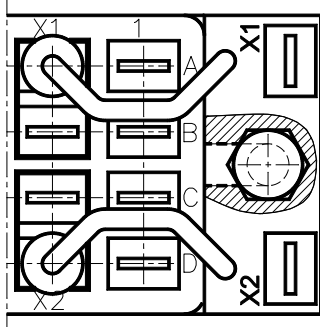
LEACH INTERNATIONAL ASIA PACIFIC

Tel: +852 2 191 3830
Fax: +852 2 389 5803

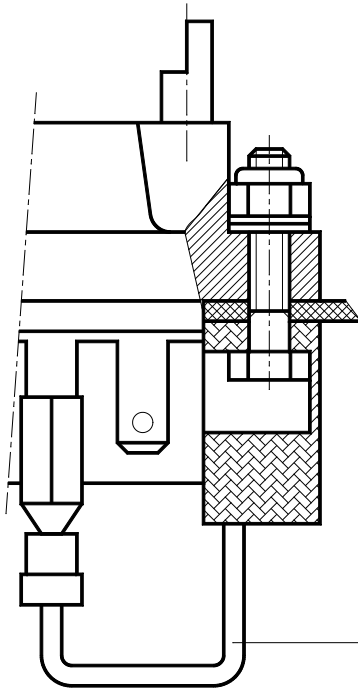
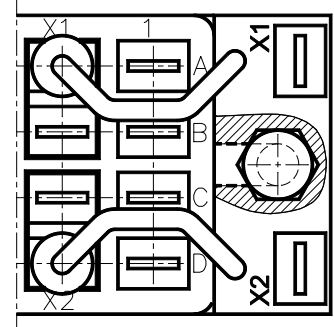
The technical information provided by Leach International Europe is to be used as a guide only, and is not meant for publication or as documentation for altering any existing specification. Dimensions are in millimeters unless otherwise specified. Rev. 06/2019.

MOUNTING
MONTAGE

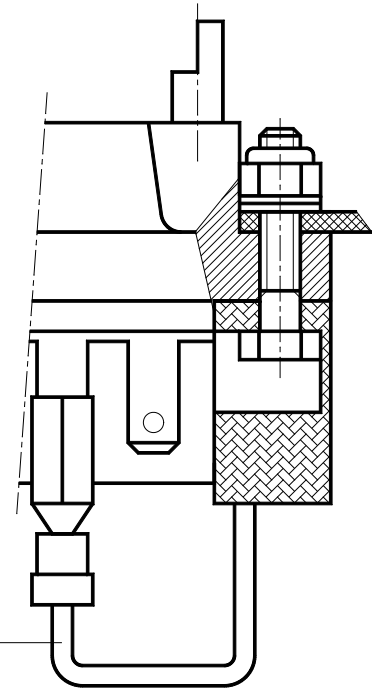
TOP MOUNT
MONTAGE SUR STRUCTURE



BOTTOM MOUNT
MONTAGE SOUS STRUCTURE



CABLE 0.93 WHITE E250 - 1 x 0.93 NF F 63 808
CABLE 0.93 BLANC E250 - 1 x 0.93 NF F 63 808



Note: The mounting hardware is supplied with socket, not with this module.
Note: Les fixations sont fournies avec l'embase, mais pas avec module écreteur.